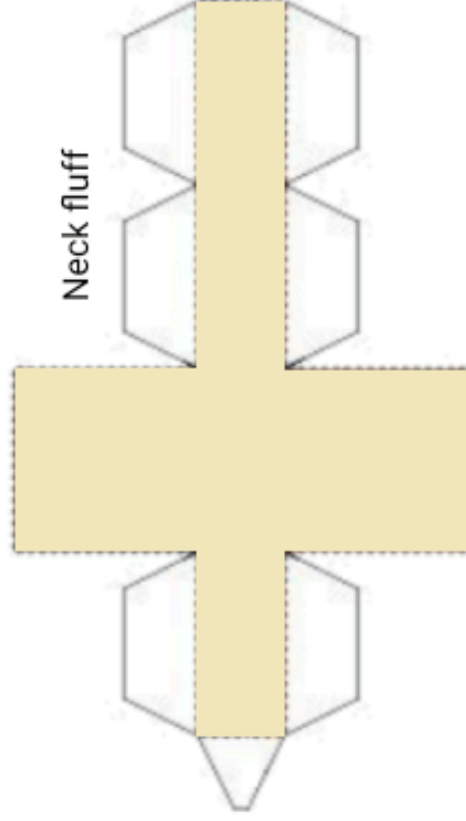
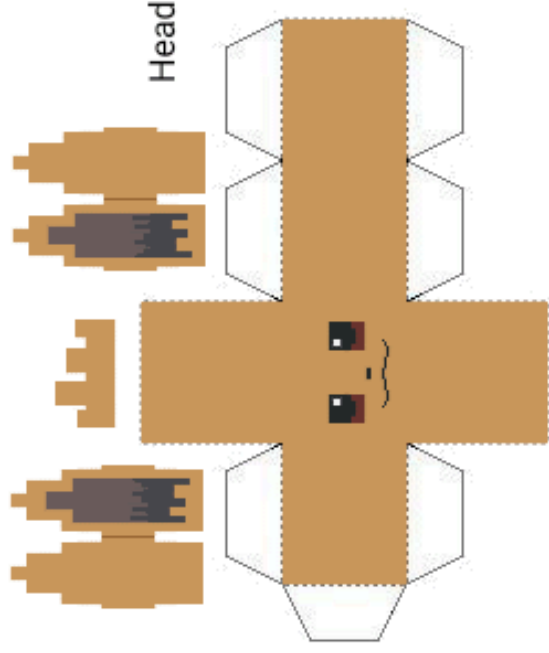
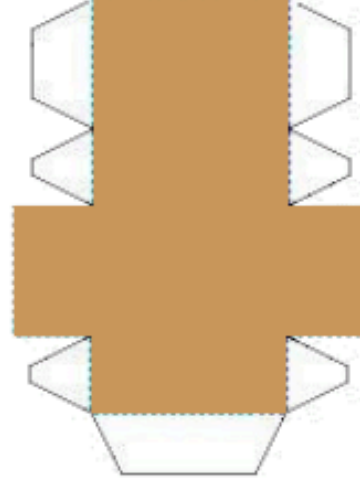


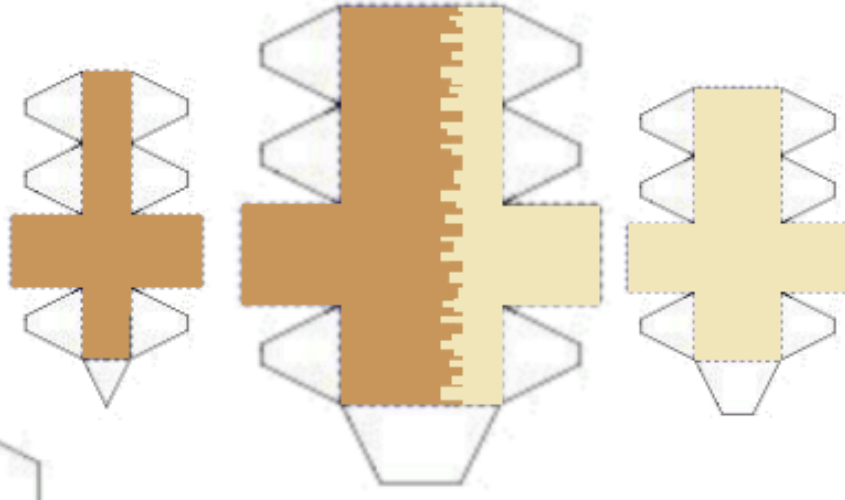
Eevee



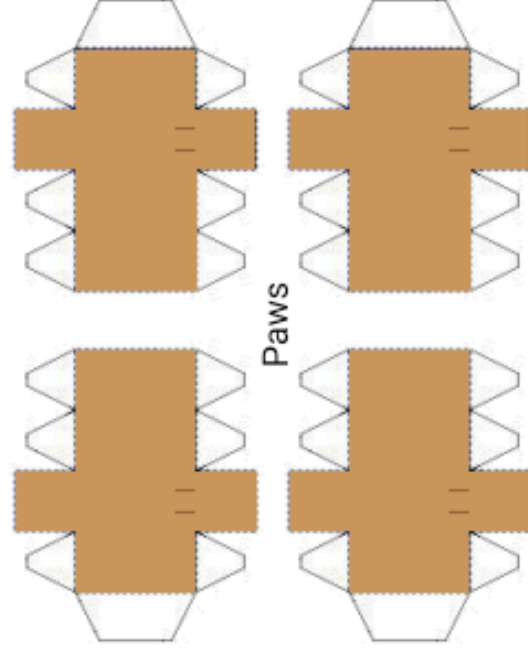
Body



Tail



Paws





Eevee

Step 1: Gather Materials

- Paper or cardstock (thicker paper works better for sturdy crafts)
- Scissors or craft knife
- Glue or double-sided tape
- Ruler
- Pencil or pen (for marking)
- Optional: Markers, colored pencils, or paint for customization

Step 2: Prepare the Template

Print the Template: If using an online template, print it on paper or directly onto cardstock.

Check the Size: Make sure the template fits your needs. Adjust the scale before printing if necessary.

Step 3: Cut Out the Pieces

- Use scissors or a craft knife to carefully cut out each shape from the template.
- Pay close attention to tabs (small flaps used for gluing) and avoid cutting them off.
- Smooth edges for a clean finish, if needed.

Step 4: Fold Along Lines

- Identify the fold lines, usually marked as dashed or dotted lines.
- Use a ruler to help fold straight edges neatly.
- Pre-fold all pieces to ensure they fit together correctly.

Step 5: Assemble the Papercraft

- Start with the main body or base of the design.
- Apply glue or tape to the tabs, one at a time.
- Press each tab onto the corresponding edge, holding until secure.
- Continue assembling piece by piece until your papercraft is complete.